



# TOPAZ SIMPLIFY V4

## QUICK START GUIDE



 **TOPAZ**  
**LABS**

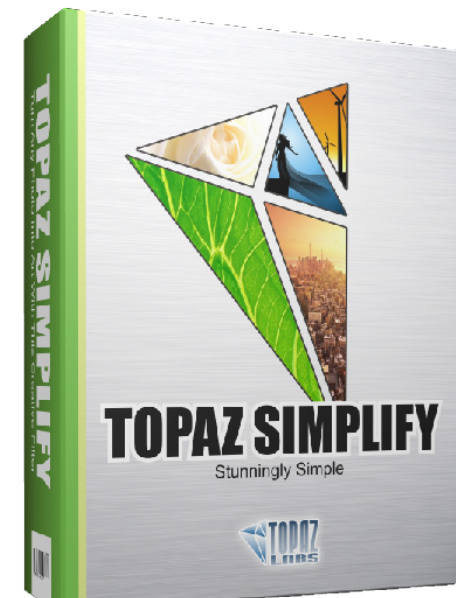
Topaz Simplify is a creative art tool that instantly transforms any regular digital image into an artistic masterpiece!

If you are new to the Topaz Simplify program you will notice that it is a great tool that for creating painterly type of effects with absolutely no drawing skills required. It is great for repurposing previously unusable photos, by adding a traditional art flair.

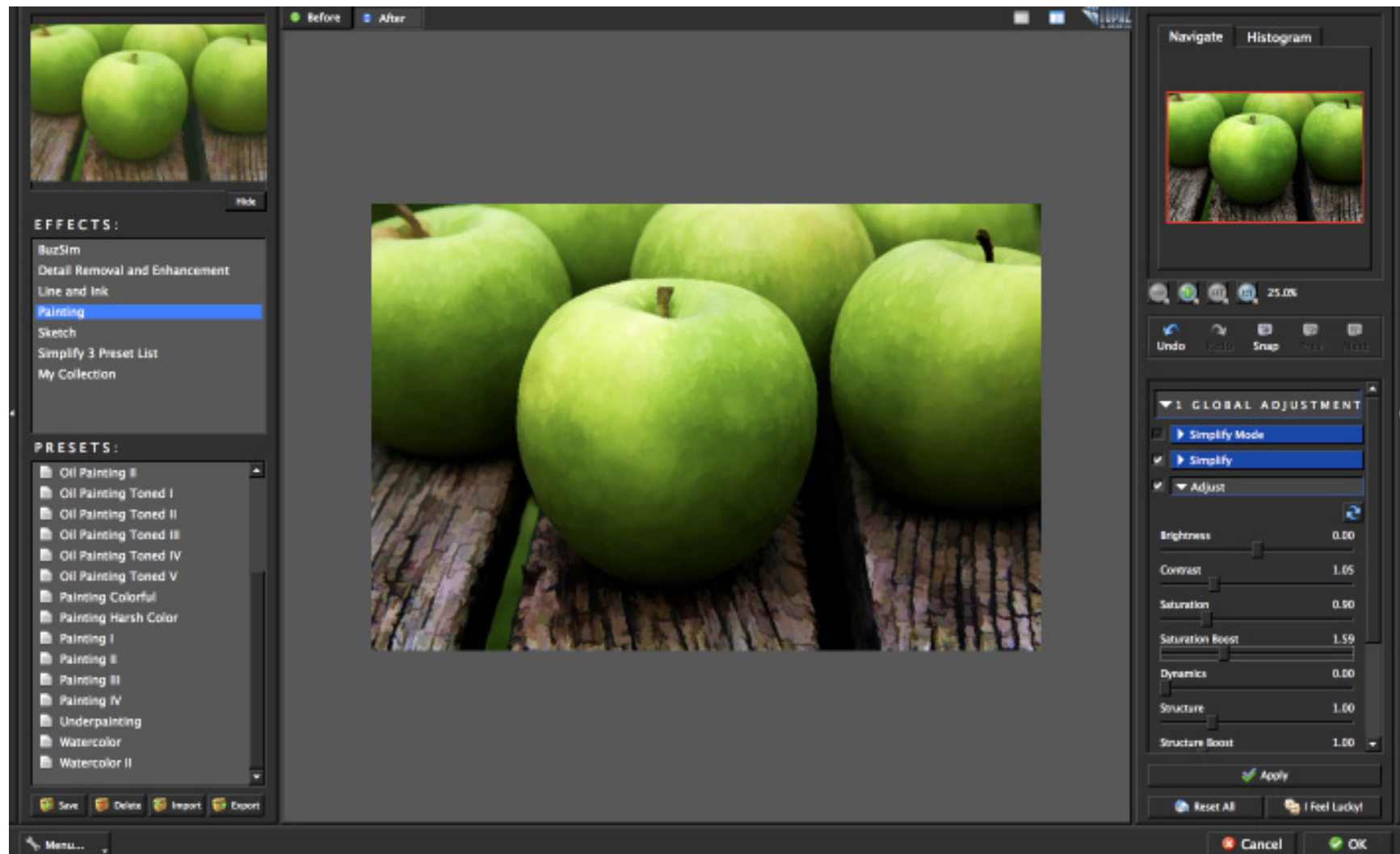
Topaz Simplify 4 features the same advanced image enhancement technology from version 3, but the user interface and workflow have been completely revamped. Topaz Simplify 4 features a new user interface, over 100 new presets, and 7 new preset collections, including a 'My Collection' option.

Here are some other fun and very useful features introduced in Simplify V4:

1. **Apply Button.** Stack multiple effects and presets during the same workflow.
2. **Local Adjustments.** Intuitive selective adjustment brush for burning, dodging, smoothing, and brushing out (erasing) added adjustments - plus edge-aware options.
3. **Presets Collections.** Presets are organized into 7 unique collections.
4. **My Collection.** Users can now save their presets under My Collection.
5. **Histogram.** Shows the tonal range of your image.
6. **Curve Tool.** Easily adjust image tonality to help emphasize tones, contrast and brightness within your image.
7. **Finishing Touches Tab.** Features options for vignettes, tone and overall transparency.
8. **Split Screen.** Use the 2-screen split view for easy before and after comparison.
9. **Effect enable/disable.** Clickable preview options that allow you to hide or view a set of adjustments for easy comparison.

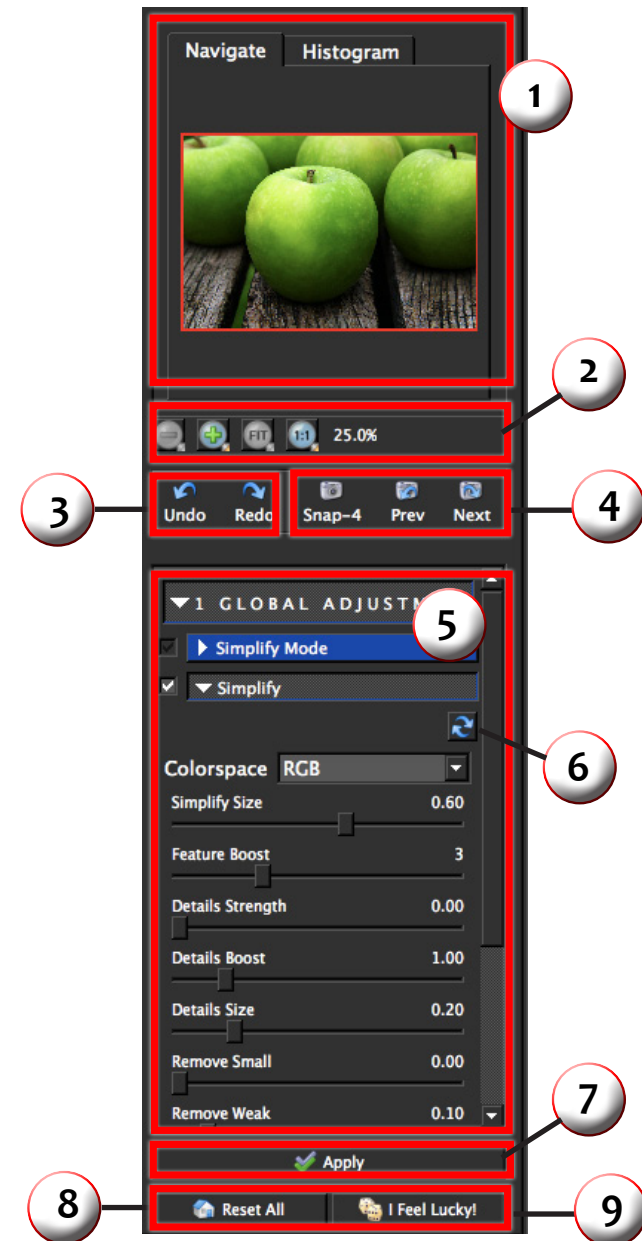






Topaz Simplify 4 features a great interface and easy to use tools.

1. **Preview Navigator/ Histogram tabs.** The Navigate tab displays the region of the preview image you are currently focused on. You can drag the preview navigator box around to pan your image. The Histogram tab displays the tonal range of your image.
2. **Zoom Buttons.** Use the zoom buttons to zoom in and out of your image. You can also set your image to fit the preview window or to view it at 100%.
3. **Undo and Redo buttons.** Move back and forward through previous adjustments.
4. **Snap and Recall buttons.** Save up to 99 snapshot settings for easy comparison.
5. **Sliders and Parameters.** Controls the editing process using sliders to adjust the various effects.
6. **Local Reset.** Resets all of the slider values in this sub-category back to the default value.
7. **Apply.** Allows you to stack multiple effects and presets during the same workflow.
8. **Reset All.** Resets all of the slider values back to the default value.
9. **I Feel Lucky!** Applies a set of randomized parameters.



Presets are a great way to speed up and simplify the whole process of using Topaz Simplify. Presets are set previews with previously defined settings that you can recall and reapply at any time.

We've included some default presets for you and, although they won't work for every single photograph, they serve as excellent starting points for customized tweaking.

#### 1. Presets Preview

The removable preview window displays preset previews. Click Hide / Show to expand or collapse the preset preview window at anytime during your workflow.

#### 2. Effects List

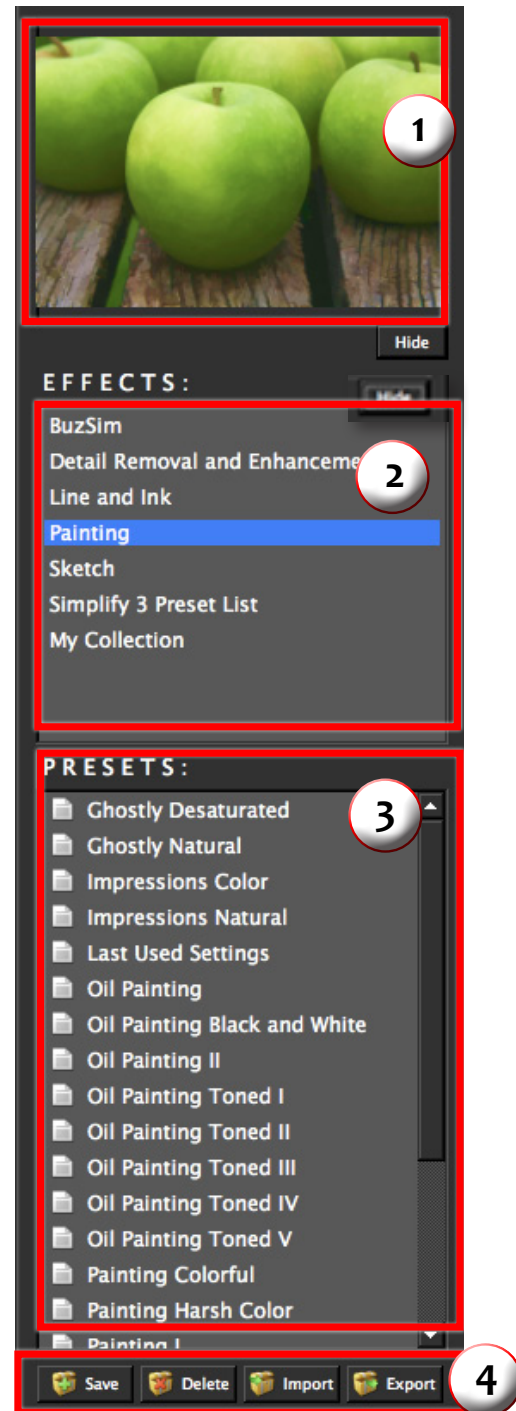
Lists all of the effect collections which contain your presets.

#### 3. Preset List

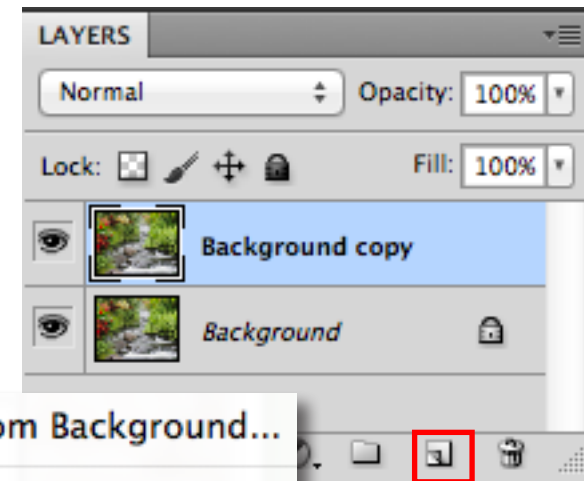
Lists all of the saved presets available for use.

#### 4. Presets Options

The preset options allow you to save your presets, delete presets (default presents cannot be deleted), import new presets and export your saved presets to share with your friends.

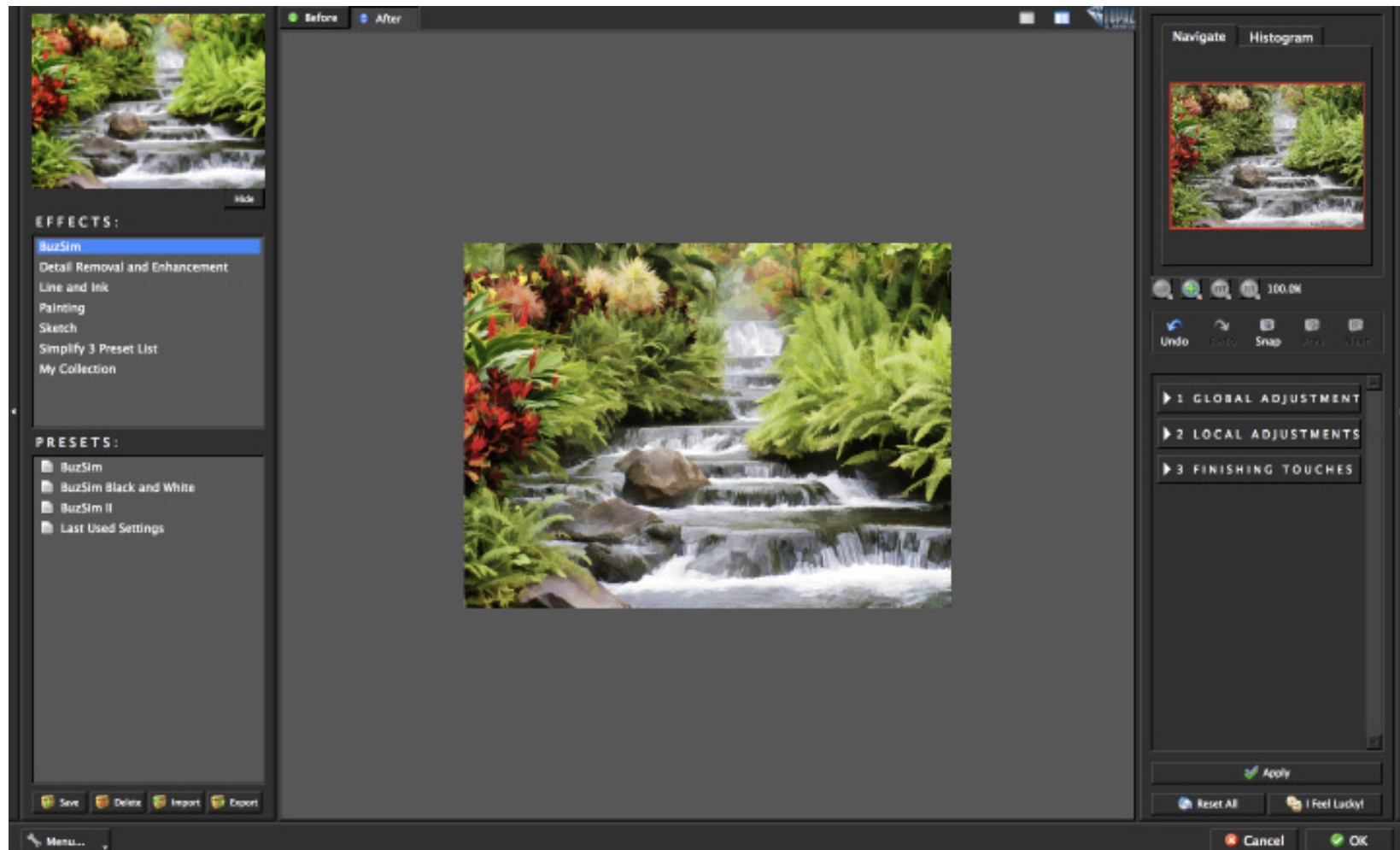


Open an image in Photoshop. Duplicate your background layer. Right-click on your image layer in your layers and select “Duplicate Layer”. You can also achieve this by selecting your image layer and dragging it down to the new layer icon. Then go to Filter -> Topaz Labs and select Simplify 4.



Once your Simplify interface opens you can start making your adjustments. If desired, you can select one of the default presets to use as a starting point and then make additional manual adjustments from there to perfect your image look.

For this example we wanted to take out certain amounts of detail for a flat, smooth, artistic effect using the BuzSim preset.

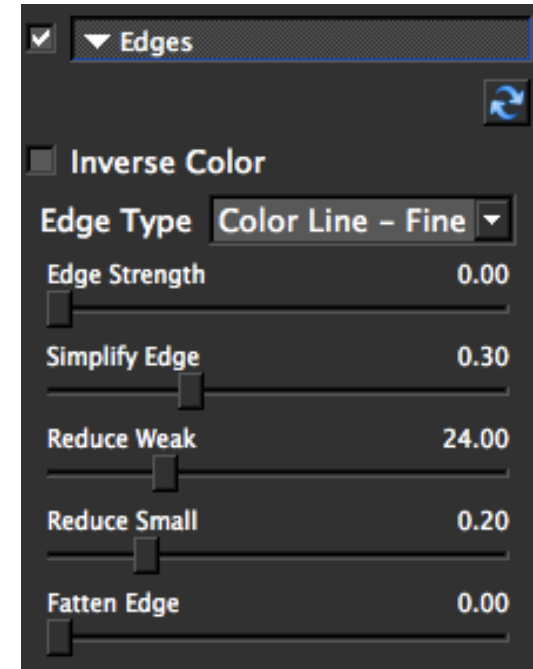
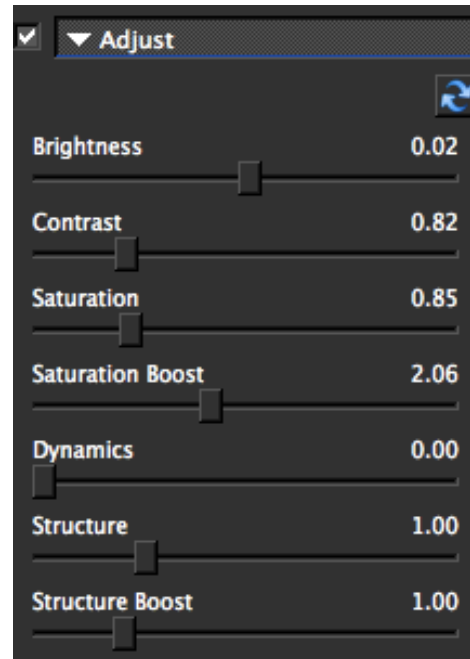
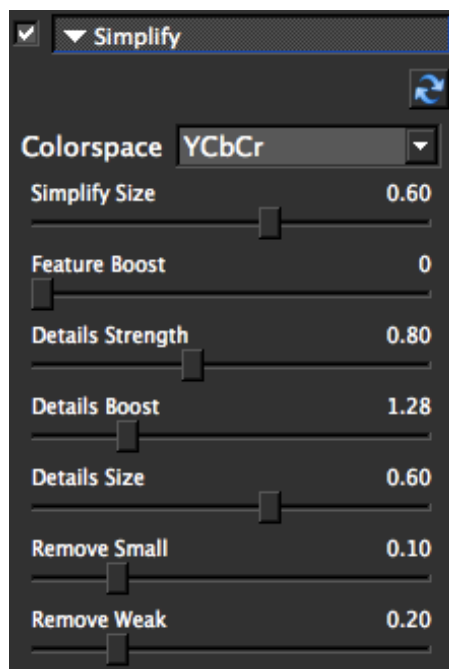




If you are satisfied with the preset adjustments then you can click “OK” to process your image and save it back to Photoshop.

If you would like to make some additional adjustments to your Simplify settings then you can do so by adjusting any of the sliders in the four tabs manually until you achieve your preferred image results.

Start in the Simplify tab. It is a good idea to begin here, and then progress to the Adjust and Edges tabs in order to see the effects of your adjustments easily. When you are happy with the Simplify settings, move to the Adjust tab. The Adjust tab gives you control over the color, contrast and brightness of your image. Then move to the Edges tab. The Edges tab is where you can really make the objects in your image pop by enhancing or minimizing the edge detail.

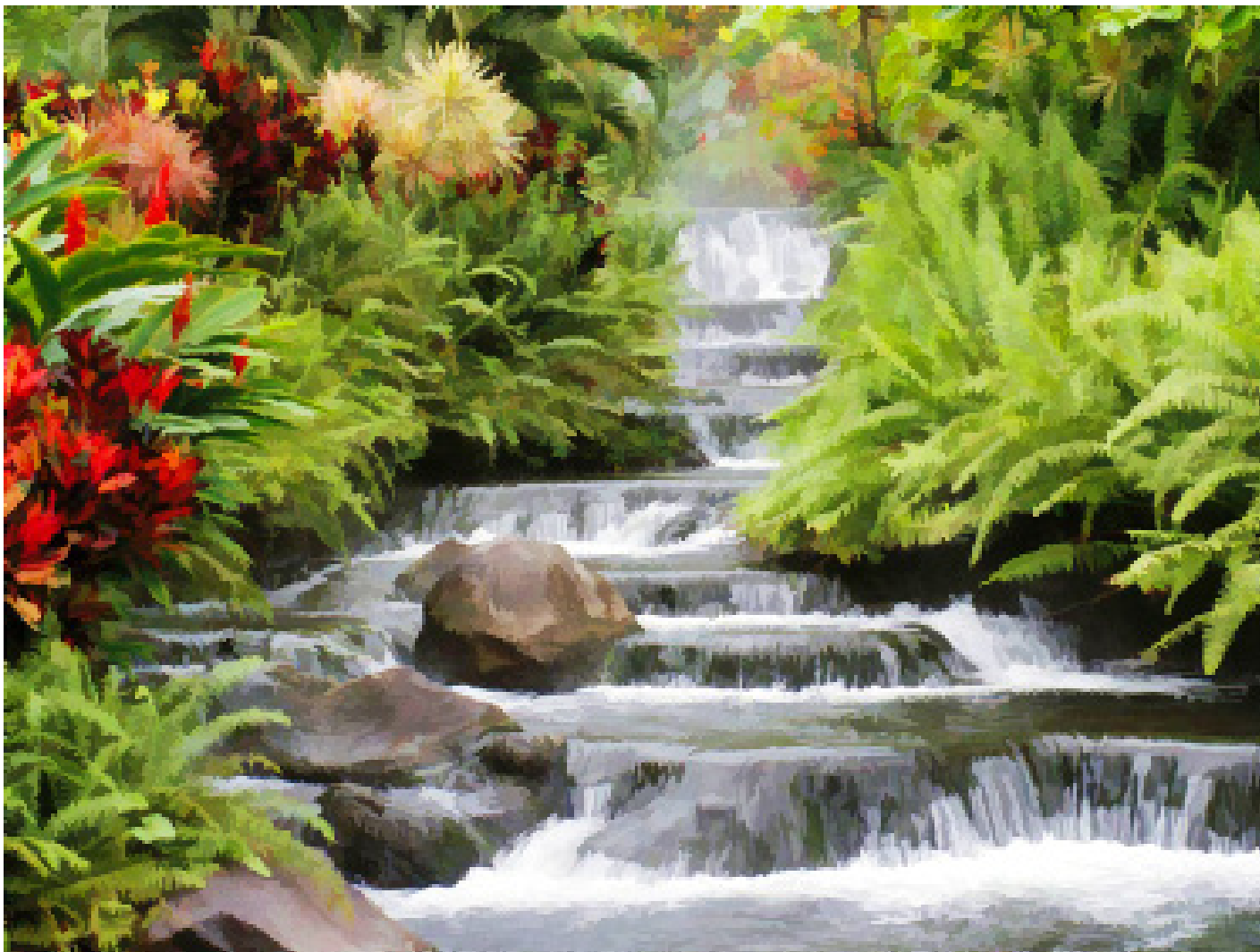


And that's it! You can now select OK to process your image and watch it transform.





Before Topaz Simplify



After Topaz Simplify

This Topaz Simplify 4 Quick Start Guide is for users who are familiar with the image enhancement process and who want to jump straight into using Topaz Simplify.

For a more in-depth and comprehensive break down of using Topaz Simplify 4 please view the Topaz Simplify User Guide.

The Simplify 4 User Guide can be found here:

<http://downloads.topazlabs.com/docs/simplify/usersguide.pdf>



You can also watch video tutorials online at: <http://www.topazlabs.com/tutorials/simplify.html>



Topaz Simplify uses some shortcut keys to speed up your workflow. Many of these keys are similar to those in Photoshop. The following keys work at all times.

MAC Shortcut	PC Shortcut	Action
Spacebar	Spacebar	View Original Image
CMD-ALT-R	CTRL-ALT-R	Reset All
Zoom to Fit	CMD-o	CTRL-o
Zoom to 100%	CMD-ALT-o	CTRL-ALT-o
+ or CMD - +	+ or CTRL - +	Zoom In
- or CMD - -	- or CTRL - -	Zoom Out
CMD-Z	Ctrl - Z	Undo
CMD - Shift - Z	Ctrl - Shift - Z	Redo
S		Expands / Collapses Simplify Tab
A		Expands / Collapses Adjust Tab
E		Expands / Collapses Edges Tab
S		Takes a Snapshot
CMD-Shift-P	CTRL-Shift-P	Recalls previous Snapshot
CMD-Shift-N	CTRL-Shift-N	Recalls next Snapshot
CMD-1	CTRL-1	View Original Image
CMD-2	CTRL-2	View Adjusted Image
Left or Right Arrow Key		Scrolls through presets
Return (enter) key		Applies selected preset
[ key		Reduces selected slider value by 0.1
] key		Increases selected slider value by 0.1
Home Key		Set the slider value to minimum
End Key		Set the slider value to maximum
Double-click slider name		Resets the slider to it's default value



Check out our new **Forum** and our **blog** for tutorials, tips and updates from Topaz Labs!



Follow us on Twitter for notifications of recent news and easily get in touch with us whenever you feel like it!



Find us on our Facebook page and network with other Topaz users!



Participate in the entirely user-led Topaz Flickr group for a helpful and highly active community for Topaz Photoshop plug-ins!



Subscribe to our YouTube channel to keep up with any newly released product video tutorials!